

Professional Fitness Equipment Supplier
Your Full Effort is Full Victory!



Rizhao Fitmus Sporting Goods Co.,Ltd

Add: Wulian County Industrial Area, Rizhao, Shandong Province, China 262300
Tel: 0086-633-5889298
Fax: 0086-633-5889298
E-mail: info@fitmus-sport.com
Website: www.fitmus-sport.com



Product catalog manual

Rizhao Fitmus Sporting Goods Co.,Ltd

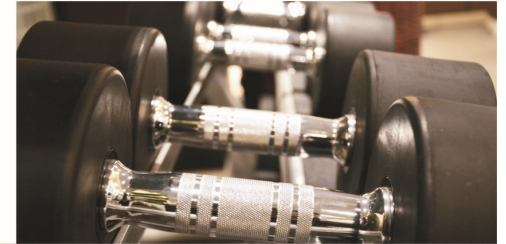


ABOUT FITMUS
HIGH-QUALITY FITNESS EQUIPMENT
FOR MAXIMUM PERFORMANCE

Setting us apart from other fitness equipment supplier is that Fitmus is focus on its.

Performing Strictly Quality Control

We have a quality controller for checking the cargo's quantity and quality for each order, also each order will have a clear packing report and quality report record for mark, we can follow and continue when do second order. Stable quality from batch to batch.



Good opportunity cross fit

Since 1961, Our county has been developing Stamping, Forging, Casting, Plastic Injection, etc, therefore our company can take advantage of these industries to supply very good cross fit products. Since 2008, cross fit is being a popular activity in US, Europe, Australia, Etc., our company like to dedicate to develop cross fit products .



OUR START UP

Established in early 2015 we are a relatively young company, however this has not held us back from supplying some of the best cross fit supplies & home fitness equipment for you. We have a dedicated and experienced sales and service team that has been serving the fitness industry since 2010.

With excellent customer service, excellent product knowledge, reasonable prices and great business-to-business support we are soon to be the client trusted supplier.

Casting Foundry

Our casting foundry factory has ISO9001 & TS16949 quality control Certificates and use the Gravity Cast for high quality Casting Blank, Such as Kettle bell, It has the good feature of a void free surface, single piece casting, a seamless handle and a textured finish, also with a machined flat base.



Strong market Sense

We are always concerning our client's need and meet their requirement. We launched our competition kettlebell with Exclusive Inner Core Technology(ICT) in 2015.(Exclusive Inner Core Technology™ (ICT™) means NO fillers or welded bases.). It is the most revolutionary kettlebell design on the market with the good feature of Balance.



Wide Product Range to Choose from

Now our product range include kettle bell, dumbbell, Olympic weight plates & other free weights, wood plyo box, wood jerk box, wood push-up, wood gym rings, wood balance board, Leather sandbags, Wall ball, Bulgarian bag, Aqua bag, Medicine ball, power Bag, Crossfit rig, Prowler sled, Power cage, Paralettes rack, battle rope, foam roller, latex band, etc.

We sincerely hope to have friendly cooperation with you party.





- | | | |
|---|----------------------------|-------|
| 1 | Weight Lifting Series | 01-08 |
| 2 | Body Weight&Gymnastic | 10-13 |
| 3 | Strength&Condition | 15-21 |
| 4 | Racks&Rigs | 23-26 |
| 5 | Strongman | 28 |
| 6 | Equipment Storage | 30-32 |
| 7 | Balance&Mobility & Agility | 34-37 |

1

Weight Lifting


Fitmus is the leading provider of quality barbells, Fat gripz, globe gripz, bumper plates, collars, kettle bells, dumbbells, Steel sledge hammer, steel mace bell, storage accessories and everything else you'll need to equip a garage gym or full-scale training facility. From beginners to Crossfitters, Olympic lifters to powerlifters, our broad range of weightlifting bars suitable for nearly every skill level and training goal. This includes an assortment of specialty training bars included Barbells 7 Feet-Man's bars / 6.6ft Elite women bar / Technique Training Bar etc, Fitmus also offers many of the industry's most popular steel plates and bumpers led by the factory which has year's experience such as Hi-Temp Bumper, as well as Olympic Plates, Competition Bumpers. Fitmus also supply Pro® Elite Precision Competition Kettle bells (ICT technology). It is the most revolutionary kettle bell design on the market with the good feature of Balance, Powder Coat Cast Iron kettle bell and Mini 1LB kettle bells, etc.

Need a bar storage or plate storage rack to keep your gym in order? We make those too.


Part one




	<p>Number: Fm1000</p> <p>Commodity: The Fitmus Barbells 7 Feet-Man's bars</p> <p>Description: Bar Use: Olympic Weightlifting, Powerlifting, Crossfit Bar Weight: 20KG Diameter: 28.5MM Knurl: Olympic/dual knurl marks Center Knurl: No Center: black zinc coating Loadable Sleeve Length 16.40"</p>	<p>Knurl Marks: Dual Shaft Coating: Black Zinc Sleeve Coating: Bright Zinc Bushing/Bearing: Bushing Weight Capacity: 1500LBS Tensile Strength 190,000 PSI Customizable color bands on Sleeve per your choice</p>
---	--	--

	<p>Number: Fm1005</p> <p>Commodity: The Fitmus Barbells 6.6ft Elite women bar- 15KG</p> <p>Description: length: 201cm (6.6ft) sleeve diameter: 50mm Bar Use: Weightlifting, Powerlifting, Crossfit Bar Weight: 15KG Diameter: 25MM Knurl Marks: Dual Center Knurl: No</p>	<p>Center coating: Black Zinc Sleeve coating: Bright Zinc Bushing/Bearing: 4 needle bearings+2 Bush Bearings Weight Capacity: 1200LBS Customizable color bands on Sleeve per your choice</p>
---	---	--


	<p>Number: Fm1010</p> <p>Commodity: The Fitmus Barbell 7man training Olympic Weight Bar</p> <p>Description: Product Specification: sleeve diameter: 50mm Bushing/Bearing: Bushing Bar Use: Olympic Weightlifting Knurl: Olympic Center Knurl: Middle Fits 2" hole plates</p>	<p>Made of solid steel, Bright Chrome Surface. Weight capacity: 750 lbs Can be used at home or in the gym</p>
---	--	---


	<p>Number: Fm1015</p> <p>Commodity: The Fitmus Barbell 6.6" Olympic women training Weight Bar</p> <p>Description: Product Specification: Bar Type: women's Bars length: 201cm (6.6ft) sleeve diameter: 50mm Bar Use: Olympic Weightlifting Bar Weight: 15KG Diameter: 25MM</p>	<p>Knurl : Olympic Center Knurl : Middle Center coating : Bright Chrome Sleeve coating : Bright Chrome Bushing/Bearing : 2 Bush Bearings Weight Capacity: 600LBS Can be used at home or in the gym</p>
---	--	--

	<p>Number: Fm1020</p> <p>Commodity: The Fitmus 15LB Technique Training Bar</p> <p>Description: Bar Use: Technique Bar Length: 0872" Bar Weight: 15LB Diameter: 28MM Knurl: Olympic Center Knurl: No Shaft Coating Bare Aluminum</p>	<p>Loadable Sleeve Length 9.10" Sleeve Coating Bright Zinc Bushing/Bearing Brass bushings Weight Capacity: 350LBS 100% Aluminum material The Fitmus barbell, that is good weight for the new beginners&children for doing overhead squat</p>
---	---	--

	<p>Number: Fm1025</p> <p>Commodity: The Fitmus Barbell Olympic Solid Chromed 47" EZ Curl Bar</p> <p>Description: Easy to grip surface Durable chrome finish Solid steel construction Bearing/bush: Bush 300 lb. weight capacity 25mm grip 47"Length</p>
---	---

	<p>Number: Fm1030</p> <p>Commodity: The Fitmus 56" Olympic Combo Hex Bar</p> <p>Description: alloy steel construction with beautiful zinc plating length measures 56 inches Weight Capacity 500lb Weight: 21kgs Product in Inches (L x W x H): 56.0 x 24.5 x 5.0 Fits 2-Inch Olympic Plates Perfect for beginner and advanced lifters</p>
--	---

	<p>Number: Fm1035</p> <p>Commodity: The Fitmus 2" Lock Jaw Pro 2" Olympic Locking collars</p> <p>Description: 2" / 50mm Olympic LOCKING Barbell Collar, 360G per set Sold in Pairs Color: Black, Blue and Red Black: Men bar; Red: Woman bar; Blue: Tech bar. -- Note: Sold as pair</p>
---	---

	<p>Number: Fm1040</p> <p>Commodity: The Fitmus 2" Crossfit Olympic Lock Jaw barbell collars/Clamp</p> <p>Description: Construction: Solid Nylon Frame Feature: Easy Locking action Color: Black Sold in Pairs Size: 50mm; Weight: 380G per set Package Include: 2Pcs of Olympic Barbell Collars Fit on all Olympic barbells sleeves (2" or 50mm)</p> <p>Solid injection molded frame -- Note: Sold as pair</p>
---	--

	<p>Number: Fm1045</p> <p>Commodity: The Fitmus 2" Aluminum Barbell Collar for Standard Olympic Barbell</p> <p>Description: Type: Barbell Collars Material: Aluminum 320G per set Designed to be used on 50mm Olympic Bar Sleeves Color: Silver, Black, Red, Yellow Fits all Olympic barbells sleeves (2") - Note: Sold as pair</p>
--	--

	<p>Number: Fm1050</p> <p>Commodity: The Fitmus Barbell Olympic 2-Inch Spring Clip Collars in rubber handle</p> <p>Description: 1 pair pack, Accommodates 2" bars(50mm) Weight: 250G per set Comfortable grip handles. Spring tension Stainless steel Sold as Pair</p>
---	---

	<p>Number: Fm1055</p> <p>Commodity: The Fitmus Barbell Olympic 1-Inch Spring Clips Collars in Rubber handle for Olympic Barbell 1" (2.5cm)</p> <p>Description: Made from Solid Steel. Spring Collars are comfortable and easy remove. Fit Olympic Barbell 1" (25mm) or Dumbbell Bars Weight: 60g(one piece) Size: 1"(2.5cm) - Note: Sold as pair</p>
---	--



Number: Fm1060

Commodity: The Fitmus 2" Chrome Olympic Spring Collar (Pair)

Description:
Made from Solid Steel.
Fit Olympic Barbell 2" (50mm)
Size: 2" (50mm)
- Note: Sold as pair



Number: Fm1065

Commodity: The Fitmus Olympic Weightlifting Screw Star Collars

Description:
outer:90mm length: 90mm
inner hole: 51mm,
Suits 50mm / 2" Olympic bars
2.5kg net weight each - 5kg total
Black powder coated finish
-Note:sold as pair



Number: Fm1070

Commodity: The Fitmus Fat gripz

Description:
Material: Silicone
Length: 10 cm
Outside Dia: 5 cm
Inner Dia: 2.5 cm
Colour: Blue / Green
Weight:600g
Fits All Standard and Olympic Bars (Approx 25-28mm Diameter)
sold as Pair



Number: Fm1075

Commodity: The Fitmus Fat gripz

Description:
Material: Silicone
Length: 12.5 cm
Outside Dia: 5.7 cm
Inner Dia: 2.5 cm
Colour: Blue / Green
Weight:700g
Fits All Standard and Olympic Bars (Approx 25-28mm Diameter)
sold as Pair



Number: Fm1080

Commodity: The Fitmus GLOBE GRIPZ

Description:
color: Blue
diameter:2.75"
Will fit comfortably on bar shaft diameters
measuring 25mm to 32mm.
650G per one piece



Number: Fm1085

Commodity: The Fitmus Barbell Pad

Description:
Material: PU leather
Color: Black
Fits All Standard and Olympic Bars (Approx 25-28mm Diameter)
Increases Comfort When Bar Rests on Shoulders During Squats
Comfortable Foam Padding; Durable, Wipe Clean PU Cover (non removable);
Full Length Velcro Closure for Secure Fitment
Fits all standard bars extra long 16" pad length
Weight: 145G per one piece



Number: Fm1090

Commodity: The Fitmus TPE Weight Lifting Shoulder Protector barbell squat lever protector pad

Description:
made of TPE, more comfortable than hard ABS.
Suitable Sport: Weightlifting
Memory elastomer, automatically adjust the angle Shoulders perfect fit everyone's shoulder
Soft material, you can bend it with one hand, loosen restitution
Color:Green,Blue,Yellow,Red,Orange can choose. Weight:380G per one piece



Number: Fm1095

Commodity: The Fitmus Olympic bumper Plate black

Description:
Premium Black Bumper Plate Solid Rubber with Stainless Steel Insert
Material: NR+SBR
Black solid rubber Olympic bumper plates
Weights are available in :10lb,15lb,25lb,35lb,45lb,55lb and 5kg,10kg,15kg,20kg,25kg,30kg
Weight tolerance: +_2%
Sold as piece



Number: Fm1100

Commodity: The Fitmus Premium Color Olympic Rubber Bumper Plates

Description:
Made from solid Virgin Rubber+58% SBR
with 2 inch Stainless Steel Inners
Weights are available in :10lb,15lb,25lb,35lb,45lb,55lb and 5kg,10kg,15kg,20kg,25kg.
hardness SHA (65-95)
Thicknesses
5kg Grey - 28mm
10kg Green - 47mm
15kg Yellow - 61mm
20kg Blue - 70mm
25kg Red - 90mm
Weight tolerance: +_1%
Sold as piece
Rubber Training Bumper Plates suitable for Olympic lifting
Ideal for commercial gyms, schools or home gyms, etc



Number: Fm1105

Commodity: The Fitmus Hi-Temp Bumper Plate Black

Description:
Made from durable Recycled Rubber
Great for Olympic Lifting
hardness SHA (65-75)
The bumper plates have a 2" stainless steel insert
All Weights are 17.5" in Diameter.
Weights are available in :10lb,15lb,25lb,35lb,45lb,55lb and 5kg,10kg,15kg,20kg,25kg.
Sold as piece
The Hi-Temp plates are made to handle the everyday abuse of Traditional, Home or College gyms.



Number: Fm1110

Commodity: The Fitmus 2" Olympic Competition Rubber Bumper Plates color

Description:
190 OR 185 kg, Competition Set with small rubber friction plates.
Set Details: One (1) 20kg or 15kg Barbell, with (2) each, 25, 20, 15, 10, and rubber coated 5, 2.5, 2.1, 1.5, 1.0, 0.5 kg plates, plus two (2) 2.5kg barbell collars.
Colours match to the International Weightlifting Federation
All plates are Same diameter and fit 2" bars
NR+SBR 70%
Weight in KG: 10kg,15kg,20kg,25kg per pair
Sold in pair
Thickness
10kg green-black 33mm -SHA75-85
15kg yellow-black 43mm -SHA75-85
20kg blue-black 55mm -SHA75-85
25kg red-black 62mm -SHA75-85
Weight tolerance +_10g
The load test times
10kg-20000
15kg-20000
20kg-25000
25kg-25000
- Note: Price is per pair



Number: Fm1115

Commodity: The Fitmus Competition Rubber Friction Plates/Change plate

Description:
small rubber friction plates
Material: 45#Steel+Rubber
weight: 2.5kg Red, 2kg Blue,
1.5kg Yellow, 1kg Green and 0.5kg White
Weight tolerance: +/-10g
sold as pair
- Note: Price is per pair

each size moq quantity:30pairs



Number: Fm1120

Commodity: The Fitmus Fractional Plates/ Metal training Plates

Description:
Colored Economy Training Set
187 OR 182 kg. Training Set.
Set Details:
One: (1) 20kg or 15kg Training Barbell,
two: (2) each, 25, 20, 15, 10 competition bumper plate
three : (2) each metal training plates, 5 2.5, 2, 1 & 0.5 kg
four: (2) each 2.5kg barbell collar

Metal Training Plates 2.5kg Red, 2kg Blue, 1.5kg yellow
1kg Black, 0.5kg Blue, 0.25 White.
sold as pair
- Note: Price is per pair
each size moq quantity:30pairs



Number: Fm1125

Commodity: The Fitmus Tri-Grip Black Rubber Olympic Weight Plates

Description:
The rubber coating provides a more aesthetic finish
than plain or painted cast iron finishes. The rubber
coating also protects against rust and reduces noise
of discs "clanking" against each other
High quality rubber coated cast iron
Tri-grip design makes loading safer and easier
Weight in KG: 1.25kg, 2.5kg, 5kg, 7.5kg, 10kg, 15kg,
20kg, 25kg

Suitable for use with 2" Olympic Bars and 1" standard
Bars.
Sold in PAIRS
This product is categorised as an "Olympic" weights
have a hole in the centre of each disc of just over 50mm
(2inch) diameter
"Standard" weights have a hole in the centre of each
disc of just over 25.4mm (1 inch) diameter



Number: Fm1130

Commodity: The Fitmus 2" Olympic Cast Iron Tri-Grip Weight Plates

Description:
Our cast iron tri grip weight plates are perfect for home and commercial use.
Tri-grip weights are designed with built-in handle grips, which make loading on to bars safer and easier.
Easy grip triple handle design
Available in 1.25kg / 2.5kg / 5kg / 10kg / 15kg / 20kg
- Tri-Grip handles for easy transport
- Grey Hammer tone extra-thick coating for superior rust protection
- smooth finish
- cast iron forged one-piece construction for added strength
- suits all olympic barbells/dumbbells (2"/50mm)
- weight stamped for easy identification
- Suitable for use with 2" Olympic Bars and 1" standard Bars.
- Sold in Pairs



Number: Fm1135

Commodity: The Fitmus 2" Olympic Tri Grip Rubber weight plate new

Description:
Rubber Olympic Tri-Grip Pro weight plates are designed to make lifting and loading of weights on a barbell easier.
The discs are made of durable high quality rubber, have a sleek design and suitable for commercial and/or home use.
The rubber coating protects against oxidation and has a sound dampening effect.
- Suitable for all 50mm Olympic barbells.
- Durable rubber coating in order to protect the floor and also sound dampening.
- Equipped with convenient handles for various exercises.
Safe, durable and easy to use.
- Weight in KG size: 1.25kg, 2.5kg, 5kg, 10kg, 15kg, 20kg, 25kg
- Sold in Pairs



Number: Fm1140

Commodity: The Fitmus Pro Rubber Olympic Tri-Grip Plate

Description:
The discs are made of durable high quality, have a sleek design and suitable for commercial and/or home use.
The rubber coating protects against oxidation and has a sound dampening effect.
Suitable for all 50mm Olympic barbells.
Durable rubber coating in order to protect the floor and also sound dampening.
Equipped with convenient handles for various exercises.
Safe, durable and easy to use.
- Weight in KG size: 2.5kg, 5kg, 7.5kg, 10kg, 15kg, 20kg, 25kg
- Sold in Pairs



Number: Fm1145

Commodity: The Fitmus Pro Elite Precision Competition Kettlebells

Description:
- Complete range of sizes from 8 - 32kg (MAX WEIGHT)
- Manufactured with strict ISO 9001 quality control using leading edge casting technology.
- Single cast using advanced gravity die cast technology.
- Exclusive Inner Core Technology™ (ICT™) means NO fillers or welded bases & NO rattle from loose filler.
- Meets IKFF (International Kettlebell & Fitness Federation), Girevoy Sport Union (GSU) and International Union of Kettlebell Lifting (IUKL) competition standards.
- Regulation 33 mm handle diameter designed for use with or without chalk.
- Colorful Paint is available
- IronEdge/KBUSA® Recommend.



Number: Fm1150

Commodity: The Fitmus Steel Cast Competition Kettlebells

Description:
use the Gravity Die Casting Process for more consistent quality
- use the most modern Casting methods and high tech moulds in the manufacture of our kettlebells.
- Any kettlebells that have Casting defects are discarded.
- Kettlebell handle thickness and shape are smooth & optimized
- Machined flat bases
- Weight in KG: 8kg, 12kg, 16kg, 20kg, 24kg, 28kg, 32kg



Number: Fm1155

Commodity: The Fitmus Chrome handle competition kettlebell

Description:
- A superior professional grade competition kettlebell
- 100% Steel construction
- electroplate coating handle for prevent Oxidation
- Color-coded for easy identification
- Weight stamped into Kettlebell
- Bare metal handles
- 12kg - Blue

- Regulation 33mm Handle
- Available in the following sizes:
4KG-Light Pink 6KG-Light Green 12kg - Blue
8kg - Pink 10kg - Light Blue 24kg - Dark Green
16kg - Yellow 20kg - Purple 36kg - Grey
28kg - Orange 44kg - Silver 48kg - Golden



Number: Fm1160

Commodity: The Fitmus precision casted steel competition kettlebell

Description:
With uniform sizes throughout the range, the Competition Pro Kettlebell meets competition grade standards.
A superior professional grade competition kettlebell
- 100% Steel construction
- Color-coded for easy identification
- Weight stamped into Kettlebell
- Bare metal handles
- A comfortable, rust-resistant, brushed stainless steel handle is permanently welded into a pressed and spun carbon steel bell.
- The smooth, flat base means other exercises can also be performed confidently.
- The bell handle is shot blasted
- kettlebells in the range: 8kg, 12kg, 16kg, 20kg, 24kg, 28kg and 32kg.
8kg - Pink
10kg - Light Blue
12kg - Blue
16kg - Yellow
20kg - Purple
24kg - Dark Green
28kg - Orange
32kg - Red
36kg - Grey



Number: Fm1165

Commodity: The Fitmus Adjustable Kettlebell 32kg

Description:
In the Pro Grade shape
7 plates contained within:
2kg, 2kg, 2kg, 4kg, 4kg, 8kg, 8kg kettlebell case = 32kg
it make 12, 14kg, 16, 20, 24, 28, and 32kg kettlebells
Inner Weight Stamped KGs for identification easily
- Color as blow:
Blue+Black
Blue+Green
Yellow+Green
Yellow+Dark Blue
Black+Black
Red+Black



Number: Fm1170

Commodity: The Fitmus Mini Kettlebell 1 lb. Solid Kettlebell

Description:

Mini Kettlebells are made of the exact same materials as big kettlebells, and to the same tough standards. these items are sold as novelties and are not intended to be lifted, swung, or thrown. Keep Mini Kettlebells away from young children and pets



Number: Fm1175

Commodity: The Fitmus 1lb mini fibreglass plastic kettlebell

Description:

Mini Kettlebells are made of the exact same materials as big kettlebells, and to the same tough standards. these items are sold as novelties and are not intended to be lifted, swung, or thrown. Keep Mini Kettlebells away from young children and pets



Number: Fm1180

Commodity: The Fitmus 40lb adjustable kettlebell

Description:

This model is designed with heavy duty plastic that makes it durable. It is made of a base weight 10 lbs and the weight of the kettlebell is each of 5 lb and the maximum plates weight is 40 pounds. - has weight of up to 40 pounds

- The weights can be quickly adjusted from 10 pounds to 40lbs
- Weight adjustment is simple and easy by pulling a locks and twisting to remove or add weights.
- Adjustable Russian kettlebell comes with (6) 5 pounds weight



Number: Fm1185

Commodity: The Fitmus Powder Coat Cast Iron kettlebell

Description:

Kettlebell was designed around these requirements. Premium Material: started with the highest quality HT250 Iron, not scrap. Void free surface: use a proprietary casting process so each bell have the cleanest finish possible. This allows to have a smooth, comfortable handle. Single Piece Casting: cast in one solid piece, creating a stronger, more reliable handle and a void free surface. The Kettlebell does not use plastic caps, plugs, or patches like lower quality products. Wide Flat Machined Base: chose to machine the base of our kettlebell flat (not leave it as a raw casting) so it sits perfectly on the floor and does not wobble. Finish: Has a matte black powder coat finish that has a great feel and will hold chalk. This feels more natural than a thick epoxy finish. Colors: color coded the handles. By associating each kettlebell weight increment with a different color handle - Each size has moq quantity: 60Pcs



Number: Fm1190

Commodity: The Fitmus Color vinyl dipped kettlebell

Description:

Kettlebells are designed with an extremely ergonomic baked acrylic handle and a colour coded vinyl dipped base. The baked acrylic handle makes the bells more rust resistant and easier to use without sacrificing 'grip'. The colour coded base makes weight identification easier and minimises damage to flooring. Kettlebells are available in 4kg increments from 4kg to 32kg
Colour per Weight:
4KG- PINK
8KG- PURPLE
12KG- ORANGE
16KG- YELLOW
20KG- RED
24KG- BLUE
28KG- GREEN
32KG- GRAY
- Note: Each size moq quantity: 60Pcs



Number: Fm1195

Commodity: The Fitmus Soft Kettlebell

Description:

Kettlebell is covered in a soft neoprene fabric with a soft grip handle and filled with iron sand making them extremely comfortable to handle. They will not damage your floor or equipment if dropped, and have soft grip handles which are very comfortable, so they are ideal for outdoor or indoor use.

Available size: 2kg, 3kg, 4kg, 5kg, 6kg, 7kg, 8kg.
- Note: Soft Kettlebell has quantity requirement 1000Pcs



Number: Fm1200

Commodity: The Fitmus Rubber Coated Hex Dumbbells

Description:

Made from solid cast iron with a 6-sided anti-roll design and encased in rubber (urethane) Chrome ergo handles. Resistant to cracking and fading while protecting floors. Weight size in KG: 1kg, 2kg, 2.5kg, 3kg, 4kg, 5kg, 7.5kg, 10kg, 12.5kg, 15kg, 17.5kg, 20kg, 22.5kg, 25kg, 27.5kg, 30kg, 32.5kg, 35kg

Resist cracking and fading
Made from solid cast iron
No spinning or loosening of dumbbell head
- Sold in Pairs



Number: Fm1205

Commodity: The Fitmus Premium Rubber Round Dumbbells

Description:

Our round rubber dumbbells combine one-piece cast heads with steel inserts, bolted onto the handle. Then the bolt is welded to secure the head for extra durability and safety. - molded end caps with numbers permanently marked - prevent stickers from coming off during use - Made of NR+SBR+chrome plated - Nontoxic smell

- Prevents damage to floors by using rubber heads
- Ergo design helps to reduce fatigue and maximize comfort
- Available in size: 2.5kg to 50kg, 2.5kg increase
- Two color end cap with easy to read weight markings
- opening client's mold if do customized dumbbell
- each size has moq quantity: 20pcs
- sold in piece



Number: Fm1210

Commodity: The Fitmus Fitness Steel Sledgehammer

Description:

Sledge training uses the flexing chain of muscles which helps balance out the more extensively used extensor group of musculature. The key to a good workout is to balance the use of the agonist and antagonist muscles. Durable steel construction - Solid weld design
Diameter:

- knurl for sure grip
Center of handle is smooth allowing for an easier swinging motion
- Altered center of balance for smooth swing motion
- Available size in KG: 4kg, 6kg, 8kg, 10kg, 15kg, 20kg, 25kg
- Sold in piece
- Note: each size moq quantity: 30Pcs



Number: Fm1215

Commodity: The Fitmus Steel Mace Bell

Description:

Mace Bell Features:
Commercial heavy-duty quality for use in all types of facilities
All steel construction
Evenly weighted and completely spherical head (no flat top)
Head is fully welded to handle
Extended handles for greater leverage than traditional

sledge hammers
Knurled "Safety Grip" extends 9.75 inches from base of handle and then again 9.75 inches from middle of handle towards head, ensuring solid grip even with sweaty hands
Weight increment stamped on the base of the handle for easy identification
Black gloss finish
- weight in LB size: 10lb, 15lb, 20lb, 25lb, 30lb, 35lb, 40lb



Number: Fm1220

Commodity: The Fitmus Steel Club bell

Description:

made of a single machined piece of steel paint coated with a chip resistant matte finish. Steel is a heavier, more dense metal than iron and is highly resistant to rust and denting. Weight in KG size: 4kg, 6kg, 8kg, 10kg, 12kg, 15kg, 20kg
- Length as blow:
4kg 46cm 6kg 46cm 8kg 50cm 10kg 55cm 12kg 59cm 15kg 65cm

2

Part two

Body Weight&Gymnastic

Fitmus bodyweight and gymnastics equipment is built to meet the demands of the athlete who's all-in. Along with our heavy-duty lines of power cage and cross fit rigs, Fitmus offers virtually every type of accessory required for a bodyweight or gymnastics workout regimen. This includes Steel Gymnastic Rings, wooden gymnastic rings, Abdominal workout AB mat, Strength Bulgarian bag, Wall ball, Weight Vests ,power bag, strength leather sandbag, battle ropes, as well as climbing rope and more, as well as the improved wall ball which we ever developed wall ball with Rubber particles and keep good balance.



Rizhao Fitmus Sporting Goods Co.,Ltd

FITMUS



Number: Fm1225

Commodity: The Fitmus Wood Gymnastic Rings with Numbered Straps

Description:

The wood gymnastic rings are professionally CNC machined and hand sanded from your choice of 1.11" baltic birch plywood (FIG specs) or 1.25" baltic birch (gym specs). They include heavy duty 18-foot long 1.5" wide cam buckle straps with numbered markings to make it easy to line your rings up evenly and quickly.

What is included:

- (2) 1.5" wide, 18 foot long numbered straps
- (2) High quality baltic birch wood rings
- (2) Very strong and easy to read (feed web) cam buckles
- Velcro straps to keep excess strap out of the way Numbered straps make set-up and adjustments faster!
- 1.11 inch diameter is great for those used in the Olympics 1.25inch diameter is used for crossfit training.
- One Set includes 2 wood rings, numbered straps, buckles and a velcro strap
- Diameter: 9.25" - Inside diameter: 6.75"
- Ring diameter: 1.11"
- Strap length: 18ft, Strap Width: 1.5"
- Weight: 1.8kg per pair.
- Capacity: 600 lbs



Number: Fm1230

Commodity: The Fitmus Plastic gymnastics rings with straps

Description:

- Specifications:
- Ring inner diameter: 18.5cm (7.2") - Ring outer diameter: 23.5cm (9.25")
- 1.11" in ring thickness
- one Set of two high impact ABS plastic gym rings
- Rings have a textured grip and are moderately weighted
- Supports such exercises as push-ups, iron cross, dips, pull-ups, and more
- Perfect for CrossFit and gymnastics enthusiasts
- 2 Rings & 15 FT / 1.11inch Nylon Straps with Buckle
- Capacity: 600lbs



Number: Fm1235

Commodity: The Fitmus Exercise Abdominal Workout AB Mat

Description:

- 1. Color: Black, Rose red, Purple, Green
- Outside Material: PU Leather
- 2. Size description: 30"37"7.5cm
- 3. QUALITY High density foam with a safe and comfortable design contoured to your lower back to provide perfect support and to help prevent injury. One size fits all.
- 4. PROTECTION Attached foam pad protects and stops abrasion to tailbone, prevents skin burn, and prevents the Abdominal Trainer from slipping during sit-ups.



Number: Fm1240

Commodity: The Fitmus Premium High Quality Abdominal Mat

Description:

- Material: Leather
- Color: Black
- Folding Size(L * W): 35 * 29.5cm
- Unfolding Size(L * W): 73 * 29.5cm
- Item Weight: 800g
- The foldable & lightweight design makes it portable for easy storage or travel. One size fits all.



Number: Fm1245

Commodity: The Fitmus strength bulgarian bag

Description:

- Made of durable and highly resilient sythetic leather for long lasting
- Filled with a combination of wool and sand for accurate but comfortable weights
- Special flexible handles open up a mixture exercises
- Useful for explosive movements, stability and core training
- Squat, lunge, swing and throw the bag to challenge your bodies functionality
- the Bulgarian Bags come in set weights of 5kg, 8kg, 10kg, 12kg, 15kg, 20kg. Sold as Singles.
- Each size has moq quantity requirement: 20pcs, available color: RED,BLUE,GRAY,GREEN,ORANGE,BLACK.



Number: Fm1250

Commodity: The Fitmus Wall Ball

Description:

- Wall balls can also be added to a variety of exercises simply by holding the ball while performing the exercise in Crossfit training wall ball shots are the primary use for these balls but it can be used for so many more exercises.
- Material: 1.2mm Sythetic Leather. DIA:14IN(35cm). Keep good balance.
- each size has quantity requirement: 50Pcs
- Available color: Purple,Orange,Red,Black,Gray,Yellow,Green.



Number: Fm1255

Commodity: The Fitmus wall ball

Description:

Individually constructed, stitched, and tested for quality, the wall balls are perfect for use in CrossFit exercises. Designed for the best durability and shape retention. Ultra-strong panels reinforced with advanced stitching at every seam.
Specialized panels designed for maximum grip
Uniform diameter of 35cm in circumference) on all medicine balls, made from 18 pieces of 1.2mm synthetic leather. Keep good balance.
-each size has quantity requirement: 50Pcs. Available color: Purple, Orange, Red, Black, Gray, Yellow, Green.



Number: Fm1260

Commodity: The Fitmus Premium Wall Ball

Description:

weight balanced and are the next evolution of wall ball technology. Very durable thick double stitching and grippy synthetic leather is perfect for CrossFit wall ball exercises and high speed medicine ball work
white print in weight and logo that looks fantastic
Beautifully color coded by weight for easy identification
14" diameter for every size; Material: 1.2mm Synthetic Leather. Filler: Rubber.
- Specialized panels designed for maximum grip
- Double stitch and well balanced
- Designed for the best durability and shape retention
- Keep good balance.
- Don't let the price fool you. Good quality wall ball that easy to grip with even bounce.
Home or commercial use, this wall ball is made out of high quality material and stitching.
-each size has quantity requirement: 50Pcs
-Available color: Purple, Orange, Red, Black, Gray, Yellow, Green.



Number: Fm1265

Commodity: The Fitmus Power bag

Description:

Training with Powerbag teaches the body to use its core stabilizers effectively in order that transfer of energy can take place effectively during even the most complex of movement patterns. It constantly emphasizes a high level of co-ordination within each movement and increases the power by which these co-ordinate movements can be carried out.
These come pre-filled in 5kg, 10kg, 15kg, 20kg, 25kg increments, but they cannot be changed.
color: red, green, yellow, blue, black, orange, gray --each size has quantity requirement: 50Pcs



Number: Fm1270

Commodity: The Fitmus aqua bag

Description:

Quality Aqua Bag which is primarily designed to throw you off balance forcing you to use your stabilising muscles and core to the max.
Holds up to 20kg of water; Four handles
75cm long x 68cm circumference. DIA: 22cm.
Holds up to 28kg of water
Pump included Pump included. Color: red, yellow, blue, green.



Number: Fm1275

Commodity: The Fitmus Strength Leather Sandbag

Description:

Materials: is PVC leather with net and pu waterproof top quality
Handle: soft rubber with encryption nylon straps
Copper buckle no the common iron buckle
All straps use encryption ribbon more robust
Seven rubber handles more reasonably
YKK zipper
- Weight after fill sand
40lb :core sandbag
80lb :core sandbag
120lb :core sandbag
- Note: Each Sandbag has 3 inner bag, material: Nylon
- Ultimate Sandbag recommend
- Each size Moq quantity: 30pieces



Number: Fm1280

Commodity: The Fitmus Sandbag's Belt Leather

Description:

DO WEIGHTED PULL-UPS, DIPS AND CHIN-UPS EASILY with Sanded/Water weighted Bags.
The additional backpack straps allows you also can use the Bag as your daily backpack, sports bag or beach bag.
The straps detaches in seconds and are attached to the top and bottom handles on the edges.
-- Pink color, Add extra 1.5 dollars per piece.



Number: Fm1285

Commodity: The Fitmus Nylon Sandbag

Description:

the materials is 1000D nylon with more pu materials waterproof , High quality
Handle: soft rubber with encryption nylon straps
Copper buckle no the common iron buckle
All straps use encryption ribbon more robust
Seven rubber handles more reasonably
- Available size in KG: 15kg, 30kg, 45kg



Number: Fm1290

Commodity: The Fitmus D adjustable handle exercise grip

Description:

It is good tool for adjust strength 50lb-350lb
Material: Steel + Hard Aluminum
Color: Dark Silver
Diamention: length: 30cm, width: 23cm Net weight: 510g for Grip, Spring weight: 104g.
- Noted: one Grip has 2 Springs Free.
Spring nickel-coating.



Number: Fm1295

Commodity: The Fitmus Fitness Gym Chalk Black

Description:

100% Pure Magnesium Carbonate - 1lb
Blocks maintain integrity during use
crumble resistant
Contains (8) 2oz. individually wrapped blocks
No additives or chemicals
Created by athletes for athletes
Optimal for Crossfit, Weightlifting, Rock Climbing and Gymnastics



Number: Fm1300

Commodity: The Fitmus MAGNESIUM LIQUID GYM CHALK

Description:

A great solution for gyms and users who don't want white chalk flakes all over their floors and training equipment!
The liquid gym chalk dries instantly and can be applied both to your hands and feet giving the users a superior overall grip.
Available in a 200ml squeeze top bottle, this is a must for any athlete.
Shake bottle before use for best application



Number: Fm1305

Commodity: The Fitmus Body Conditioning Battle Rope

Description:

Our polypropylene ropes are originally designed to withstand the rigors of the shipyard.
Strong enough! 30inch long, 1.5" thick poly-rope has molded handles for added safety and durability
Rope can be anchored easily with any sturdy object - Made in China
Length: 30ft (9 m) Diameter: 1.5inch (3.81cm)
and Length: 50ft (15.24m) Diameter: 1.5inch (3.81cm)
-A carton refers to 1.5inch*30feet
-B carton refers to 1.5inch*50feet



Number: Fm1310

Commodity: The Fitmus Black battle rope with nylon cover

Description:

Each polyethylene rope is wrapped in a tough nylon jacket with an additional protective
Made in China
Length: 30ft (9 m) Diameter: 1.5inch (3.81cm) and Length: 50ft (15.24m) Diameter: 1.5inch (3.81cm)
Material: Polyethylene
Includes protective Nylon jacket and Bulldog Collar
-A carton refers to 1.5inch*30feet
-B carton refers to 1.5inch*50feet



Number: Fm1315

Commodity: The Fitmus Climbing rope with hook

Description:

manila climbing ropes offer the same reliable grip and durability that's made the classic manila rope a staple of military bases and shipyards for decades
Mounting bracket required
Material: Durable Sisal
Diameter: 1.5"
Rope Length Options: 12ft, 16ft
- A carton refers to 1.5inch*12feet

- B carton refers to 1.5inch*16feet



Number: Fm1320

Commodity: The Fitmus Battle Rope - Anchor

Description:

Solid metal wall anchor for the Battling rope and useful for other implements that need a solid connection point on the wall. Simply pass your battling rope through the loop and you are ready to go, this item can also be used in association with other products like the running harness or power band/ speed power loop exercises and drills. Comes with 4 plugs and fixing screws and suitable for fixing to all types of Concrete, Brick or timber walls/structures. Our bracket is suitable for conditioning ropes 1.5" to 2" in diameter



Number: Fm1325

Commodity: The Fitmus Storage Hook

Description:

Storage hook allows for easy coiling of the rope on the wall to keep it out of the way when not in use. suitable for clean and tidy storage of your battling ropes or other items such as Speed Power Loops/bands on the wall. Comes with 4 plugs and fixing screws

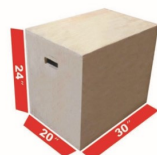
3

Strength & Conditioning

Fitmus supply you a complete line of everything you need for your Strength, Conditioning and Exercise Gym, Club or Athletic Facility, This includes Plyo boxes, Jerk box, Training Sled, No-bouncing slam ball, rubber flooring, safety mats, parallel bar, pro dual landmine, Glute ham raised developer machines, rowers and more, we make sure that you are fully outfitted from Day one, saving your time and money from Fitmus.

Part Three





Number: Fm1330

Commodity: The Fitmus 3-in-1 wooden Plyometric Box(20"x24"x30")

Description:

All wood panels are CNC machined for secure, precision interlocking and pre drilled screws makes this box a very fast to install plyometric box.
Dimensions: 30" x 24" x 20" (can be turned on any side)
The centre of the box is reinforced with a plywood bracing on all 4 sides for maximum strength.
Maximum user weight = 150kg
- Noted:The Flat Pack Plyo Box gives you the same 20", 24", and 30" height options but ships unassembled to save you on shipping costs.



Number: Fm1335

Commodity: The Fitmus 3-in-1 Wooden Plyometric Box(12"x14"x16")

Description:

Features:
Pro-duty wooden construction.
Slip free surface.
Easy to assemble.
Save money and space with 3 box sizes in 1.
Solid wood platform to support heavy weight athletes.

Rotate the box for more challenging heights Specifications:
Material: Wood
Height: 12"
Width: 14"
Length: 16"
Weight: 15lbs.
Plyo box supports up to 350lbs



Number: Fm1340

Commodity: The Fitmus 3-in-1 Wooden Plyometric Box(12"x16"x18")

Description:

Ideal for box jumps and other plyometric exercises.
made from 18mm thickness poly-wood.
Rounded handles for a comfortable grip.
Plyo box supports up to 350lbs
Weight: 18lbs.



Number: Fm1345

Commodity: The Fitmus Wooden Puzzle Plyo Box

Description:

Constructed with a signature puzzle design Our Wooden 3-Level Plyo Box offers a versatile, quality box which is CNC machined for a precision finish. Made from 18mm thickness plyo-wooden and the formfitting levels can be changed to adjust the height (8" 12" 20") ; A space-saving trapezoidal design; Ships flat.
The Wooden Puzzle Plyo Box comes with hardware and pre-drilled holes for fast glueless assembly.



Number: Fm1350

Commodity: The Fitmus Stackable Plyo Box

Description:

These are high quality 18mm Birch Ply Wooden Plyometric Boxes
The boxes stack on top of each other via an interlocking lip. Once stacked the boxes do not move and are safe to jump on.
Each Box is compatible, meaning if you buy two they can be stacked together.
Landing surface area of 22" x 22" (56cm*56cm)
Stack neatly to save you valuable space.
Rounded corners to save injury.
The revolutionary design is engineered to stack vertically and securely with the signature puzzle design.
Perfect for beginners and advanced athletes.
Conveniently stack and store boxes when not in use to conserve space -Note:Sold as a set



Number: Fm1355

Commodity: The Fitmus Wooden Trapezium Plyo Boxes 12" 18" 24" 30"

Description:

Constructed of 3/4" (18mm) grade plyo-wood.
Marine grade protective finish.
Stackable for easy storage
they are CNC machined and come pre-assembled.
Available in 12, 18, 24 and 30 inch variants.



Number: Fm1360

Commodity: The Fitmus Jerk Box

Description:

Stackable and Interlocking
Internal brace structure, see details
Every block has stoppers on the top, which prevents the bar bell to roll off.
Each set contains 2 x 2.25" 2 x 6" 2 x 15", total 8 individual.
Size of each block: 91x51cm (LxW) Adjustable in height 6cm - 89cm
The 2.25" block must be used on the top of the stack when the sets are in use.
The weight of the complete set is 172kg. Note:Fully assembled.



Number: Fm1365

Commodity: The Fitmus Jerk Box

Description:

The blocks are resistant against heavy workouts and will therefore not wobble or move
Stackable and Interlocking - Polished sides and corners Made of 20mm plywood
Internal brace structure, see details
Every block has stoppers on the top, which prevents the bar bell to roll off.
Each set contains 2 x 2.25" 2 x 6" 2 x 15", total 8 individual.Size of each block: 91x51cm (LxW) ;
Adjustable in height 6cm - 89cm;The 2.25" block must be used on the top of the stack when the sets are in use.
The weight of the complete set is 180kg.Maximum weight: 500kg - Note:Fully assembled.



Number: Fm1370

Commodity: The Fitmus soft 3-in-1 Foam Plyo Box

Description:

The soft design of the box reduces the risk of injury when the athlete fails at a jump.
No more skinned and cut up shins for those that like to push their training to the max.
The durable vinyl cover resists wear and tear while remaining firm even after heavy use.
Never worry about footprints or dirt again, as the vinyl covering allows for easy cleanup.

Safest Plyo Box Available
Solid and Stable
Durable Foam Interior
Double Stitched Vinyl Upholstery
Resists Compression
20"24"30" Heights in One Plyo Box



Number: Fm1375

Commodity: Soft Plyo Box Set (3'6'12'18'')

Description:

soft sided plyo box offers 4 different heights 7.5cm 15cm 30cm 45cm Heights in One Plyo Box Plyo for various exercises
The soft design of the box reduces the risk of injury when the athlete fails at a jump as they provide a soft landing for those missed jumps!
Double Stitched Vinyl Upholstery
Made from high density closed cell foam. It will keep their shape and their edge.
Failsafe velcro fasteners keep the boxes together and make for easy placement
These boxes come in a set of 4.
Each box is 90cm wide X 75cm long
Product size:90*75*97.5CM



Number: Fm1380

Commodity: The Fitmus Soft Plyo Box Set(6'12'18'24'')

Description:

soft sided plyo box offers 4 different heights 15cm 30cm 45cm 60cm Heights in One Plyo Box Plyo for various exercises
The soft design of the box reduces the risk of injury when the athlete fails at a jump as they provide a soft landing for those missed jumps!
Double Stitched Vinyl Upholstery
Made from high density closed cell foam. It will keep their shape and their edge.
Failsafe velcro fasteners keep the boxes together and make for easy placement
These boxes come in a set of 4. Each box is 90cm wide X 75cm long Product size:90*75*150cm



Number: Fm1385

Commodity: The Fitmus Steel Plyo Box Set

Description:

Stable and durable
Perfect for crossfit and functional training.
our Plyometric Boxes are constructed with fully-welded steel frames that endure years of hard use.
Non-Slip Neoprene Rubber surface supported.
Rubber feet protects floor and prevents movement during use; Legs are constructed at a 6 degree angle to prevent tipping; Designed to be nested for easy storage
Boxes may be used both indoors and outdoors
All products are steel-shot blasted to ensure a quality finish; Custom colors available
Six boxes(12 inch) 30cm (18inch)45cm (24inch)60cm (30inch)75cm (36inch)90 cm (42inch)106cm



Number: Fm1390

Commodity: The Fitmus Adjustable Steel Plyometric Box

Description:
Height ranging from 48cm-57cm.
Non-Slip Rubber top
Develops explosiveness for sports
Can provide a fun form of cardio
Also suitable for strength training exercises such as box squats
Surface area: 18" x 18"
The Plyobox is designed for easy adjusting, one person can adjust height easily.
Assemble size: 52L*45W*48/75H cm



Number: Fm1395

Commodity: The Fitmus Training Sled with Harness & Straps Set

Description:
Training sled for speed training.
Assemble size: 38"L*24"W*12"H
Weights about 30 Lbs.
Drag/ puling 50-500 Lbs
- its price did not include harness



Number: Fm1400

Commodity: The Fitmus Sled Dawg with Harness

Description:
Sturdy centre pole for keeping weight secures: adjustable for 1" & 2" weight plates
Maximum weight capacity of 100lbs. Main tube size: Φ50*50*2mm; Φ48*48*2mm.
Dual leads stabilize sled during runs.
Dimensions: 99"62"26cm
Gross Weight :15kg
- its price did not include harness



Number: Fm1405

Commodity: The Fitmus Agility Training Sled with Harness

Description:
Color: Red
Powder coated welded steel
2" diameter plate loading tube designed to fit Olympic plates
Handles on back of sled for push drills
Eyelets on front of sled for pull drills
Shoulder harness attaches to tether leads which
attach to each side of sled
Weight plates sold separately
Dimensions: 39" L x 19" W x 7" H (99cm*48cm*18cm)
- weight: 29Lbs (13kgs)



Number: Fm1410

Commodity: The Fitmus Pulling Sled

Description:
Holds up to 100kg.
Sled centre Shaft can hold either Standard or Olympic Plates.
Excellent for adding speed training to your workout
-It did not include hooks&belt



Number: Fm1415

Commodity: The Fitmus PROWLER SLED&Harness

Description:
Heavy duty sled allows for pushing and pulling exercises
Plate storage stations allow for overload strength training while keeping sled evenly balanced
Multi point attachments allow for even load during pulling exercises
Includes new heavy duty H-harness designed to be user friendly and handle heavy loads
All types of sled dragging or pushing
Building lower and upper body strength and endurance
Just add your Olympic plates to achieve your desired resistance
Size: 100cm x 91cm x 105cm
Three uprights for plate loading
Made from 3mm steel
Total weight (including uprights): 52kg
-Note: two pieces of upright bar we use solid steel not steel tube.
- its price did not include harness



Number: Fm1420

Commodity: The Fitmus Dog sled

Description:
The Dog Sled offers even more variations than the prowler, ideal
It can be pushed from both ends
The plate-loaded system allows for plates to be easily added and taken away.
The dog sled can be used for sprint resisted exercises and is ideal for dragging, pulling and pushing.
-weight: 56Kgs
assemble size: 102*60*98cm



Number: Fm1425

Commodity: The Fitmus elite sled harness

Description:
Our Power Sled Harness is best used in conjunction with our Power Sled, but can be used separately.
Made exceptionally strong, this one-size-fits-all harness features adjustable straps, offers great leverage and comes with harness straps and karabiners.



Number: Fm1430

Commodity: The Fitmus classic sled harness

Description:
Our Power Sled Harness is best used in conjunction with our Power Sled, but can be used separately.
Made exceptionally strong, this one-size-fits-all harness features adjustable straps, offers great leverage and comes with harness straps and karabiners.



Number: Fm1435

Commodity: The Fitmus No-Bouncing Slam Balls

Description:
The sand filled inside keeps the ball from bouncing and rolling around during use
Textured Vinyl Cover for Extra Grip & Durability
Excellent for Increasing Total Core Strength
The slam ball offers no-bounce design
Great for CrossFit, MMA, boot camp, ab workout, rehabilitation, and many other exercises.
Used in physiotherapy, cross-fit studios and military bootcamps available size: 10lb, 15lb, 20lb, 25lb, 30lb, 35lb, 40lb and 3kg, 6kg, 9kg, 12kg, 15kg, 20kg, 25kg, 30kg max weight
- Diameter: 9" and 10"



Number: Fm1440

Commodity: The Fitmus Recycled Rubber Flooring

Description:
Gym rubber flooring is supportive and necessary to have an utmost comfortable floor for any kind of sport activities. These rubber floors are made of elastic and flexible material that intends to cushion such important body parts for sports as feet, joints, legs and back thus helping you to avoid any injury.
Easy installation
Product Specification:
Thickness: 15mm/20mm/25mm/30mm, Nominal (15mm-20mm)
Roll Width: 100cm Roll Length: 100cm



Number: Fm1445

Commodity: The Fitmus Crossfit Interval Timer 4 digit Red&Red

Description:
CrossFit Interval Timer is an extremely versatile timer featuring several functions.
Works as a clock, features programmable count up/down options, interval training with work time and rest time able to be programmed, stopwatch function to hundredths
Works with standard electrical outlets, and includes a remote control, adapter, operating instructions, and mounting brackets
Screen size: 49*16cm



Number: Fm1450

Commodity: The Fitmus Crossfit Interval Timer 6 digit Red&Red

Description:

CrossFit Interval Timer is an extremely versatile timer featuring several functions. Works as a clock, features programmable count up/down options, interval training with work time and rest time able to be programmed, stopwatch function to hundredths. Works with standard electrical outlets, and includes a remote control, adapter, operating instructions, and mounting brackets. Screen size: 73*16cm*4cm



Number: Fm1455

Commodity: The Fitmus Crossfit Interval Timer 6 digit Blue&Red

Description:

Functions include:
Store your top 7 workouts
Count Up function
Count Down function
Stop watch function
Interval Training function
CrossFit Intervals

Hundredth's of a second option for accuracy on stopwatch function
Audible beeper to start, pause and end intervals and workouts.
24 hour clock is displayed when the timer is not in use.
Wall hanging option
Screen size:73*22cm Blue+Red



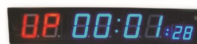
Number: Fm1460

Commodity: The Fitmus Crossfit Interval Timer 6 digit -Double Side

Description:

Functions include:
Store your top 7 workouts
Count Up function
Count Down function
Stop watch function
Interval Training function
CrossFit Intervals
Hundredth's of a second option for accuracy on

stopwatch function
Audible beeper to start, pause and end intervals and workouts.
24 hour clock is displayed when the timer is not in use.
Wall hanging option
Screen size:73*22cm*5.5cm color:Green+Red.
Net weight: 350g



Number: Fm1465

Commodity: The Fitmus Crossfit Interval Timer 8 digit

Description:

Functions include:
Store your top 7 workouts
Count Up function
Count Down function
Stop watch function
Interval Training function
CrossFit Intervals

Hundredth's of a second option for accuracy on stopwatch function
Audible beeper to start, pause and end intervals and workouts.
24 hour clock is displayed when the timer is not in use.
Wall hanging option
Screen size:82*16cm. Color:Blue+Red



Number: Fm1470

Commodity: The Fitmus Spare Remote for Crossfit Interval Timer

Description:

Digital LED Count Down/Up Interval Timer Gym Fitness Wall Clock with Remote Control Training. Spare remote for Interval Wall Timer for Crossfit Gyms and Garage Gyms.



Number: Fm1475

Commodity: The Fitmus Extreme Core Trainer

Description:

Features:
Rotating part that allows multidirectional rotation exercises and relaxing for a great intensity still of oblique. Despite the heavy base, this is a tool that you can easily carry. You can use it at the gym, at home or outdoors. The rocker is pious overload to increase the difficulty of the exercises.
specifications:
Length: 48 cm
Width: 40 cm
Height: 23 cm
Weight: 20 kg
Handle included, works only with Olympic barbells (50mm).



Number: Fm1480

Commodity: The Fitmus Pro Dual Landmine Grappler(double Torsonator Core Trainer)

Description:

Landmine training is a great way to build shoulder, upper back, and overall upper body strength. It's also excellent for toning and tightening the core through a full range of functional movements. Dual landmines mean you can work both arms independently, making possible nearly any movement you can imagine.
- ideal for multiple person use or use two bars at the same time.
Load the bar to increase the resistance.
Net weight:33Kgs



Number: Fm1485

Commodity: The Fitmus parallel bar

Description:

Thick Powder Coated Steel Frame / Comfortable Foam Handles
Rated to 200kg Bodyweight
Support Bar included - which connects the parallel bars, this can be used if you want to keep the parallel bars at a set distance away from each other etc.
Assembled Dimensions :
73cm (L) x 60cm (W) x 39cm (H)
Solid Construction / Colour -Yellow /Orange/Green



Number: Fm1490

Commodity: The Fitmus adjustable Parallettes

Description:

Parallettes can be used for various Gymnastics holds, handstands and elevated push ups
Max load kg:150kg
height:40cm width:60cm
Weight:7.5Kg
black matt powder coat



Number: Fm1495

Commodity: The Fitmus PARALLETES

Description:

Newly redesigned to be higher off the ground due to customers' requests. Sold in pairs
A size:40*25*16cm Weight:5.5Kgs
B size:60*30*34cm Weight:7.5Kgs
C size:60*30*49cm Weight:8.5Kgs
Main Tube: 50*50*1.5mm and 32*32*2mm
Black matt powder coat



Number: Fm1500

Commodity: The Fitmus Parallette Bars (pairs)

Description:

-With steel tube construction and a textured coating for premium grip.
Size :24"L(61) x 14"W(36cm) x 12.5"H(31cm)
-Weight:17Lbs Note
- Sold in Pair
main tube: Φ 40*40*2 Φ32*32*2mm
Handles are Ø32mm round tube Price is for a pair (2)
Gross weight of the pair 7.5kg



Number: Fm1505

Commodity: The Fitmus Adjustable Equalizer Rack

Description:

Adjustable Equalizer Rack
Black colour
Main tube size:Φ50*1.5mm
L*W*H:60*35*80cm
Foam comfortable grip handle bar
Can be used as free standing pair



Number: Fm1510

Commodity: The Fitmus glute ham raised developer machine

Description:

The GHD is an essential tool for the development of speed and power for both dynamic field athletes or strength athletes by strengthening the posterior chain. The posterior chain plays a vital role in a person's ability to squat or dead lift heavy, or the ability of any field athlete to run, jump, stop and start.

Material: □50*70*2.0□50*50*2.0, Size:165*82*139cm

4

Part Four

Racks & Rigs

FITMUS MAKES A FULL LINE OF RIGS,
RACKS AND SQUAT STANDS THAT ARE MADE IN CHINA.

Fitmus Power cage, cross training rig, free standing rig, heavy duty half rig, Wall Mounted Rig, pull-up systems, squat stands, made from □65*65*4mm steel with cut holes and hardware.

The same construction is used for our standard Power Racks and Squat Stands.

The Fitmus Rigs, Racks and Squat Stands are easy on the wallet, but that does not mean that we outsourced the construction or skimped on components.

Do OEM order.

You can send the drawing or sample to us. About the drawing, we can support different format, such as CAD, Proe and so on. If you don't know how to make the drawing, you can also send a sample to us. If your requirement is very simple, you can describe it directly, such as you need to do some modification on a public-known product. We will estimate the MOQ, production time, delivered way, package according the quantity, design, material, dimension and other factors, then we can give you a perfect solution.





Number: Fm1515

Commodity: The Fitmus Deluxe power rack(cage)

Description:

The power cage is a strong option for both home and commercial use. It includes the standard 32mm pull up bar; This cage does not need to be anchored to the floor. The back stabilizing bar keeps the whole system stable and sturdy during heavy lifts. No need to tear up your floor with this rack! Size: L165cm*W125cm*H252cm N.W/G.W:142.7Kgs/145Kgs square tube: □65*65*4mm



Number: Fm1520

Commodity: The Fitmus 350kg Heavy Duty Olympic Full Power Cage

Description:

Adjustable safety spotters for maximum safety
Added pull up station with multiple grip positions
Painted guide numbers on uprights for safe and easy reference
Front and rear adjustable bar catches for convenient racking during any exercise
Max weight limit 750 lbs
Size: L134cm*W122cm*H214cm
Square tube: □60*60*2mm, 5mm pin piepe safeties, max weight load: 350kgs.



Number: Fm1525

Commodity: The Fitmus Power cage

Description:

Power Rack has adjustable spotter bars that can be moved into different positions for different exercises. For example for bench press you set them just below your chest line in your pressing position
Main tube: □65*65*4mm Product size: 170L* 120W* H230cm.
Net weight: 220Kgs.
Weight capability: 600LB-1000LB



Number: Fm1530

Commodity: The Fitmus Customized Power Cage

Description:

Constructed from 3.2 mm thick steel for a rock-solid frame with a 600 kg tolerance.
The generous internal dimensions allow the rack to be used by multiple people simultaneously, whether using front Multigrip Pull Up Bar and back Single Pull Up Bar
Perfect for any commercial gym or CrossFit Box. Height – 234.5 cm
Width – 124.5 cm (185.5 cm with 30.5 cm Weight Spigots)
External Depth – 185 cm
Internal Depth – 101 cm
Net weight: 216.5
-Noted: This design is provided by Customer, if you have good design, we do. Weight capability: 600LB-1000LB



Number: Fm1535

Commodity: The Fitmus power cage

Description:

This is the obvious choice of equipment as a centerpiece of any home gym.
Power racks are fully enclosed and offer the most safety on lifts like squats and bench press.
□65*65*4 ; product size: 165*125.5*251.5cm,
Net weight: 290Kgs.
Weight capability: 600LB-1000LB



Number: Fm1540

Commodity: The Fitmus Pull-up rigs

Description:

Included: upright bar 2.5m*6pieces; upright bar 3.5m*4pieces;
rectangular beam*4pieces; double cross beam 180cm*2pieces;
double cross beam 180cm*2pieces; single cross beam 180cm*5pieces;
single tube 193cm*15pieces; safety spotting arm*4pieces; safety pin*4pieces;
screws: 100pieces.
if buy in separate, the price is different.



Number: Fm1545

Commodity: The Fitmus Upright Bar

Description:

Upright Bar: □65*65*4mm
Length: 2.5m/2.7m/3.0m/3.5m/3.6m



Number: Fm1550

Commodity: The Fitmus double cross beam 180cm

Description:

Custom Rig double pull up bar 1800 consists of two bars of different sizes. It contains both a large and a normal bar, making it a perfect all round tool for all hand sizes. The bar can be mounted and turned in various ways, making it just the bar you want wherever you want it. size: 180*35cm

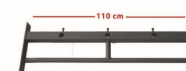


Number: Fm1560

Commodity: The Fitmus Rectangular beam

Description:

Custom Rig double pull up bar 110cm consists of three bars of different sizes. It contains both a large and a normal bar, making it a perfect all round tool for all hand sizes. The bar can be mounted and turned in various ways, making it just the bar you want wherever you want it. size: 110*35cm



Number: Fm1565

Commodity: The Fitmus double cross beam 110cm

Description:

Custom Rig double pull up bar 1100 consists of two bars of different sizes. It contains both a large and a normal bar, making it a perfect all round tool for all hand sizes. The bar can be mounted and turned in various ways, making it just the bar you want wherever you want it. □60*60*3-32*32*2mm, beam size: 110*35cm



Number: Fm1570

Commodity: The Fitmus Single Cross bar 180cm

Description:

Custom Rig Single pull up bar 1100 has a diameter of 32 mm, which is the standard measurement for a normal all around man/woman bar size. The single pull up bar serves very well as a front bar allowing you to do muscle ups and more. The single bar can be used to create a monkey bar as well. Size: 180*35cm/ 120cm*35cm/110*35cm

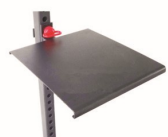


Number: Fm1575

Commodity: The Fitmus money bar for rigs 193cm

Description:

Custom Rig Single pull up bar 1930 has a diameter of 32 mm, which is the standard measurement for a normal all around man/woman bar size. The single pull up bar serves very well as a front bar allowing you to do muscle ups and more. The single bar can be used to create a monkey bar as well. two Size: 193*32*32/120*32*32 (76 inch/49 inch in length)



Number: Fm1580

Commodity: The Fitmus Step-Up Platform

Description:

This can be used in the same manner as a plyo box or even as assistance for reaching your highest Pull Up bars. The platform is 45cm*45cm*26cm, 5mm thickness material.

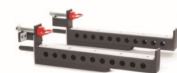


Number: Fm1585

Commodity: The Fitmus dip handle

Description:

Develop power triceps, shoulders, chest and forearms
Overall Dimensions: 27" (L) x 26.5" (W) x 10.75" (H)
Weight: 22.9lbs



Number: Fm1590

Commodity: The Fitmus Cross Rig safety spotter arm Pair

Description:

The Arms can also be used for banded squat, deadlift, and press work. They provide the perfect platform to easily add resistance training into your lifting schedule. Constructed from heavy duty steel with impact plastic protector;
Dimensions: 85cm x 10.5cm x 7cm approx
Package Content: 2 x Spotting Arms.
Net weight: 15Kgs per pair



Number: Fm1595

Commodity: The Fitmus safety pin bolt

Description:

sell individually



Number: Fm1600

Commodity: The Fitmus J cup pair

Description:

sell in Pair.



Number: Fm1605

Commodity: The Fitmus Wall ball Target

Description:

Wall Ball Target is a great addition to your rig for added accuracy training during your workout. With multiple bolt options it provides the popular 40cm and 50cm target heights that many workouts prescribe



Number: Fm1610

Commodity: The Fitmus landmine attachment

Description:

it is used at crossfit rig for attachment.
It sell together with rigs.
Not sell individually.



Number: Fm1615

Commodity: The Fitmus stued wall mounted pull up bar

Description:

our wall-mounted pull-up bars provide easy-to-assemble, cost-effective hanging solutions for professional rehabilitation and fitness facilities. Be able to combine several racks, comes with 10 dyna bolts
32mm diameter chin bar
90cm from wall
106cm wide
49cm vertical wall attach bracket
9-hole bolt pattern on each support bracket to ensure fitment
Net weight:15.8Kgs. Load weight capacity:380Lbs



Number: Fm1620

Commodity: The Fitmus wall mounted monkey pull up bar

Description:

Ideal addition to any cross fit box, martial artists, gym or home set up
Textured matte black powder coat □50*50*2mm □32*32*2mm
Net weight: 23Kgs.
Load weight capacity: 500Lbs.



Number: Fm1625

Commodity: The Fitmus Hanging Ab Straps Pair

Description:

Attach to any pull-up bar or multi-gym: the Big Fitness ab straps are fully adjustable for any pull up / chin up bar or multi gym
Easy to install : the Big Fitness ab straps are simple to install and detach from any bar
Extra padded cushions for extra comfort : comfortable, sweat-resistant cushion
Made from Oxford material, Ring: Nickel coat.
-Note: sell in pair

5

Strongman

Fitmus has always paid special attention to the unique needs of the Strongman competitor. Included here are some of our leading products essential to the Strongman workout regimen, including yokes, pro steel log, farmer's walk handle pair, adjustable squat rack, and other strength equipment.

Part Five



Rizhao Fitmus Sporting Goods Co.,Ltd

FITMUS

Number: Fm1630

Commodity: The Fitmus pro steel log

Description:
Weighing in at only 43kg empty.
With two grips and reinforced pins it can handle as much weight as you can load on it!
An essential tool in EVERY gym.
Log diameter: 300mm, weight:43Kgs,length: 1780mm,
handle diameter:30mm,
Diameter loading pin: 2inch,
material thickness: 6MM.



Number: Fm1635

Commodity: The Fitmus strongman steel log

Description:
steel logs, an essential piece of kit for gyms of all kinds everywhere.
In 220mm diameter and weighing approximately 23kg, they are perfect entry level logs for a diverse range of athletes and abilities.
1.65m in length.
32mm diameter handles.
310mm long, 50mm diameter pins suitable for Olympic plates.
material use thickness:3.5MM.



Number: Fm1640

Commodity: The Fitmus Farmer's Walk Handles Pair

Description:
Our farmers walk handles are built from the highest quality heavy steel, making them indestructible.
The farmers walk is one of the most simple strongman exercises.
Price is for the pair of handles. Powder Coated Throughout
Everything has a powder coat applied for excellent grip and durability.
Bang these things around as much as you want, and they won't show it. □60*60*3mm.
Net weight:30Kgs per pair.130*30*40cm Length: 130 cm
Handle sets can be loaded with Bumper plates (50mm) or Olympic discs (50mm)
Sleeves: 27 cm
Diameter handle: 3.5 cm
Color: Black



Number: Fm1645

Commodity: The Fitmus Farmer's walk handles Pair

Description:
Farmer's Walk handle set has a total length of 152 cm with a weight of 15kg each.
The handle sets can be loaded with Olympic halterchijven with a bore of 50 mm,
Size:L152*W14*H14cm.
Net weight:45.5Kg per pair



Number: Fm1650

Commodity: The Fitmus Adjustable Steel Squat Stands Pair

Description:
made of sturdy steel □70*70*3mm □50*50*3mm .
It provides adjustable spotters on each post that ensure your safety.
This adjustable squat stand has rubber end caps that protect your floor from scratching.
Sturdy and durable steel stand
Adjustable to fit your height
Adjustable spotters for your Safety
Individual stands
Top grade steel
Huge range of working height from 120cm – 180cm
Rated to 100kg per pair. Product size:L90*W50*(120-180cm)



Number: Fm1655

Commodity: The Fitmus adjustable squat rack

Description:
Squat Rack Single Unit. Great portable Squat rack with J-hooks.
Squat, Bench, pull up, Muscle up and much more.
Solid unit with laser cut holes and constructed of 65mm x 65mm 4mm thick square tube.
□65*65*4mm feet:50*70*3mm. Accessories:2 Jooks, 2 spotting arms, 2 red pins, 2 steel shot.
Size:L175*W120*H240CM,
Net weight:100Kgs.



6

Part Six

Equipment Storage

Fitmus manufactures a wide variety of storage racks, weight posts, bar holders, and plate trees to keep any sized gym organized and running efficiently. It includes kettle bell storage rack, gun rack, dumbbell rack, gym chalk stand, vertical plate storage, medicine ball rack, bulgarain bag rack, etc. Choose one of our Mass Storage Systems for an all-in-one rack for your bumpers, medicine balls, and dumbbells. Or keep you barbells out of harm's way with Gun Rack or innovative 10 Bar Holder.



Rizhao Fitmus Sporting Goods Co.,Ltd



Number: Fm1660

Commodity: The Fitmus 2 Tier Kettlebell Storage Rack

Description:
2 TIER KETTLEBELL RACK
Dimensions: L150*W78*H56cm
Rubber matting on both tiers
Easy to put together
Made from solid powder coated steel
Perfect to keep your kettlebells tidy and off the floor
Can hold up to 8-10 kettlebells per tier (2 x rows per tier)
Kettlebells not supplied Weight: 40Kgs.



Number: Fm1665

Commodity: The Fitmus 3 layer kettlebell storage rack

Description:
Easy storage for your kettlebells
Made of durable thick steel
Frame Thickness: □30*80*2.0t
Can be used at home or in a professional environment
Assembled Dimensions: Length: 70 x Width: 64 x Height: 81cm



Number: Fm1666

Commodity: The Fitmus Cross Training Bar&Bumper Storage Rack

Description:
Bar & Bumper Storage Rack w/ Chalk Bowl | Get all your bumper plates, kettlebells & chalk sorted.
Also holds 2 bars.
A great tool for organizing your crosstraining space, it include gym chalk bowl.



Number: Fm1670

Commodity: The Fitmus 10 pairs vertical hex dumbbell rack

Description:
10 Pair Vertical Hex Dumbbell Rack will keep your free weight area organised and clean which will result in a more enjoyable workout experience.
Dumbbells not included.
Dimensions: 49*52*127cm



Number: Fm1675

Commodity: The Fitmus 13 Pair 4 Sided Vertical Dumbbell Rack

Description:
4 Sided 13 Pair Dumbbell Rack is a Space Saving Vertical Compact Dumbbell Rack. 4 Sided 13 Pair Dumbbell Rack is Rugged Gym Equipment made for High Traffic Commercial Settings at a Price affordable enough for Home Gym Equipment.
product size: 55cm*38cm*122cm
83 lbs weights



Number: Fm1680

Commodity: The Fitmus A-Frame dumbbell rack

Description:
A-Frame Dumbbell Rack is the perfect addition to any home gym.
Constructed from heavy-gauge steel and coated in a thick layer of high-durability paint, it holds up to 6-pairs of The Fitmus Hex Dumbbells.
Its clever A-Frame design ensures stability and strength, while the H-shaped base has been coated in rubber to protect your flooring from scratches.
Overall: 50*38*108cm and Product Weight: 28 lbs ;
Weight Capacity: 200 Pounds



Number: Fm1685

Commodity: The Fitmus 10 Grid Gun Rack

Description:

Barbell Storage Gun Racks are a safe, efficient solution for storing your barbells between workouts. These wall-mounted racks free up valuable floor space, and features a high-density plastic lining designed to protect the knurling and finish on your barbells. Safely holds up to 10 barbells and/or axle bars. 6 Grid:96*14*6cm,7.2kg



Number: Fm1690

Commodity: The Fitmus Olympic 9 hole vertical barbell holder

Description:

Save space in your gym by utilising this vertical storage stand for Olympic sized bars. It has the capacity for 9 bars and is compact enough to fit in any corner or dead space for efficient storage. Or simply position the storage stand in an area which makes for easy access to the bars,Size:52*52*20cm



Number: Fm1695

Commodity: The Fitmus weight plate storage rack

Description:

Designed to keep your weight plates upright to maximise ease of use and minimise space taken up, this weight storage rack is perfect for bumper plates, hammertone plates and more. Ideal for keeping your plates close at hand and organised, this storage rack will look great filled with your weight plate collection.

Gear up your gym room and give your weight plates a home with this Weight Plate Toaster Rack with wheels. Net weight:18.5Kgs Size:124*35*9CM



Number: Fm1700

Commodity: The Fitmus Bumper Weight Plate Storage Rack with Wheels

Description:

Storage Rack weight plate holder on wheels for easy storage and transport of Bumper Weight Plates. Move all of your plates in one go No more carrying individual plates across the room to your next exercise. Your range of plates are available to use fast and efficiently. Size:L130*W31*H32cm



Number: Fm1705

Commodity: The Fitmus Olympic Plate Holder

Description:

Full commercial grade steel frame, made of elliptical tubing 40*80*1.5t; Size:78L*89.5W*115H. Net Weight:13.5Kgs



Number: Fm1710

Commodity: The Fitmus Vertical Plate Storage on Wheels

Description:

Portable bumper stand. Vertically stores up to 10 bumpers (each weighing up to 45 lbs) Supported by heavy-gauge steel base. Convenient plate storage option for gyms and boxes. Wheels make moving plates around a breeze. Height: 107 cm Width: 53 cm Weight: 10 kg



Number: Fm1715

Commodity: The Fitmus Gym chalk stand

Description:

Chalk bowl stand dimensions: 47*55*100cm Chalk bowl is made from a tough and durable polyethylene. The stand features rubber feet for traction and stability. Matt black powder coated frame. Weight:8Kgs



Number: Fm1720

Commodity: The Fitmus Chalk Stand Rack

Description:

We need chalk for good grip, but we don't need the mess associated with it. This chalk bowl will eliminate that chalk mess by allowing the excess chalk to shake off in the bowl. Bowl sits at 1000mm off the ground for easy access (no more leaning over into a bucket). □38*38*1.5t Size:45L*45W*790Hcm, Net weight:4.5Kgs. Noted: here the price did not include the bowl.



Number: Fm1725

Commodity: The Fitmus Bulgarain Bag Rack

Description:

Designed to hold up to four Powerbags. Can also be used to store other functional equipment such as bulgarain Bags. Each shelf can hold a maximum of 50kg. - material: steel - finish: powder coat - dimensions: * height: 155.5 cm * width: 59 cm * depth of the base: 86.5 cm. Steel Tube: 40*80*1.5mm



Number: Fm1730

Commodity: The Fitmus Medicine Ball Rack

Description:

Medicine Ball Rack is a strong, welded medicine ball rack that will hold up 10Pcs medicine ball. Size:59.5L*53W*157Hcm. Tube:40*80*1.5t Φ16*1.5t

7

Balance & Mobility & Agility

Browse Fitmus entire selection of speed & agility equipment and accessories, including agility ladders, cone markers, hurdles, balance board, AB carver pro, jump rope, resistance band, foam roller, massage roller stick, massage lacrosse ball and more. Set up a complete agility station suited for military training, high school and college athletics or gym.

Part Seven



Rizhao Fitmus Sporting Goods Co.,Ltd

FITMUS



Number: Fm1735

Commodity: The Fitmus Massage Lacrosse Ball

Description:
Lacrosse balls are an excellent way to loosen up those tight muscles. Roll over those knotted muscles for some trigger point therapy. These are great for those areas you can't quite reach with a foam roller. Material: TRP/Silicon dioxide. Red, Orange, Green, Blue, Yellow color. DIA: 2.56IN(6.5cm). Net weight:145g



Number: Fm1740

Commodity: The Fitmus massage peanut lacrosse ball

Description:
Double Lacrosse Balls are used to restore normal range of motion to the thoracic spine. You don't need to tape two balls together any more as our Peanut Massage Balls comes ready for you to use. This double lacrosse ball helps restore suppleness to your spine so you are ready to tackle your Crossfit. It allows you to zero in on one segment of the vertebra that might be the major cause of restriction for your entire back. Works well on upper back, neck and scapula - the thoracic spine. DIA: 2.56 IN (6.5cm) LENGTH: 5.5 IN (14cm). Net weight:330g. Material: TPR or Silicon dioxide. Red, Orange, Green, Blue, Yellow color



Number: Fm1745

Commodity: The Fitmus reaction ball

Description:
Reaction balls are designed to bounce in an erratic and unpredictable fashion. Random bounce Improve agility Improve handeye coordination Increase reaction time A great training tool for all ball sports - use against a wall or with a partner. Material:TPR, DIA:2.95IN(7.5cm). Net weight:200G.



Number: Fm1750

Commodity: The Fitmus Massage Ball

Description:
Use for a self massage or with assistance to treat back pain, improve circulation, stimulate muscles and ease tension. This massage ball is for the arms and lower legs. Can be purchased individually or as part of a set for instant massage therapy. Highly recommended for sufferers of plantar fasciitis or just for athletes looking to help prevent foot injuries or recovery fast after a workout or a run. DIA: 3"(7CM) / 9CM. Net weight: 50g/80g



Number: Fm1755

Commodity: The Fitmus Elite massage roller stick

Description:
Perfect for athletes, runners, gym rolling, sprinters, elite fitness, marathons or even beginner athletes. Muscle massage roller reduces muscle soreness. Can be used on skin or through clothing. Do not need to hurt the muscle to get benefits. Use before, after and during exercise for relief. Use on all body parts including neck, back, legs, arms, hips and shoulders. Stick Length: Approx. 17inch/20 inch Material: PVC + ABS Color: Black + Orange Weight:390g/505g



Number: Fm1760

Commodity: The Fitmus body stick

Description:
Perfect for athletes, runners, gym rolling, sprinters, elite fitness, marathons or even beginner athletes. Muscle massage roller reduces muscle soreness. Can be used on skin or through clothing. Do not need to hurt the muscle to get benefits. Use before, after and during exercise for relief. Use on all body parts including neck, back, legs, arms, hips and shoulders. Stick Length: Approx. 18inch/24inch Material: PVC + ABS Color: Black + White Weight:310g/370g



Number: Fm1765

Commodity: The Fitmus Muscle Roller Stick

Description:

Perfect for athletes, runners, gym rolling, sprinters, elite fitness, marathons or even beginner athletes. Muscle massage roller reduces muscle soreness. Can be used on skin or through clothing. Do not need to hurt the muscle to get benefits. Use before, after and during exercise for relief. Use on all body parts including neck, back, legs, arms, hips and shoulders. Stick Length: Approx. 18inch Material: PVC + PP Color: Black + White Weight:320g



Number: Fm1770

Commodity: The Fitmus body stick - 18"

Description:

Use on all body parts including neck, back, legs, arms, hips and shoulders. Stick Length: Approx. 18inch Material: Silicagel. Color: Black + Red/Black+Blue/Blue+Red Weight:400g here noted:Note that this paragraph is different in that the roller is silicone material, material comfort, softness can be adjusted to 30 degrees, 50 degrees, 70 degrees, from the fundamental solution is not adjustable firmness, different from ABS and PP material!



Number: Fm1775

Commodity: The Fitmus EVA smoothy surface Foam Roller

Description:

Foam roller is cross-over equipment from rehab training. It's lightweight and versatile, making it an ideal tool for home workout or studio. Foam Roller is put to all kinds of uses, such as stretching, self-massage, body support, and stability exercises. Hardness: 38 degree. Noted: Moq quantity: 200pcs base on 90cm length, if 45cm, then its quantity: 45cm*2*200 is 400Pcs, if 30cm, then its quantity:30cm*3*200 is 600Pcs. Size:6**36"



Number: Fm1780

Commodity: The Fitmus EVA Foam Roller Massage

Description:

Foam roller is cross-over equipment from rehab training. It's lightweight and versatile, making it an ideal tool for home workout or studio. - Floating point surface, relieving muscular pain. - Comfortable Eco-friendly EVA foam material. - Durable, maintaining consistent structure. - Light weight, easy to carry. - Great for balance training and core function training. - Size: 6**24"



Number: Fm1785

Commodity: The Fitmus EPE Foam Roller

Description:

Foam roller is cross-over equipment from rehab training. It's lightweight and versatile, making it an ideal tool for home workout or studio. Foam Roller is put to all kinds of uses, such as stretching, self-massage, body support, and stability exercises. Hardness: 50 Degree; Made from a medium density EPE foam that is firm but soft to touch. Much less likely to dent or be scarred. Firmer than EVA compound. Subtle texture on surface for traction and to alleviate the impression that the surface is slippery when exercising. Rich blue in colour. Very light in weight. Size:90 x 15cm. Net weight:850g. - Noted: order quantity base on 90cm 200pieces, if 45cm, it need 45cm*2*300,that is 400pcs. Size:45 x 15cm, Net weight:425g



Number: Fm1790

Commodity: The Fitmus Bumble Roller

Description:

Bumble Roller is the next evolutionary step from Rumble Roller. It has rounded knobs instead of sharp ones like the original Rumble Roller has. This means less sharp pain and smoother and more controlled pressure to wanted area, still with the power of a thousand elbows Color: Blue, Dark Blue, Orange, Black Size: 36cm*14cm. Net weight:680g.

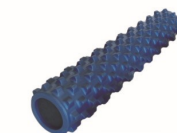


Number: Fm1795

Commodity: The Fitmus Trigger Point Foam Roller

Description:

Made of non-toxic foam and hollow design, it is an excellent tool for muscle relaxation all over the body as well as yoga practice. By gently rolling the rod, you'll feel that its uniquely designed bumps deliver comfortable, relaxing massage to sooth your muscle and relieve fatigue. Specifications: Color: Blue * Green * Orange * Black *Pink * Purple; Size:13**5"(34cm*15cm). Net weight:800g



Number: Fm1800

Commodity: The Fitmus Rumble Roller

Description:

Made from high density EVA foam with textured dotted surface which is soft to touch for added comfort. Perfect tool for yoga, pilates, fitness exercises, physiotherapy and rehabilitation. Specially designed raised grid pattern bumps are firm but flexible Specifications: Color: light blue,dark blue,green,pink,orange Material: EVA Net weight: 440g. Available color: Black/Blue/Green, Short Size:32L*12.5W. Long: 79L*15W, Available color: Black/Blue/Green.Net weight:1500g



Number: Fm1805

Commodity: The Fitmus 2" Crossfit Olympic Lock Jaw barbell collars/Clamp

Description:

Go weight-less and train with the power of resistance. Improves stretching and strengthening of muscles without the added stress to your joints. Conditioning - can strengthen your heart and lungs, while increasing your metabolic rate. Power - can increase your speed and agility by activating fast-twitch muscle fibers. Strength - can increase your muscle, tendon, and ligament strength. Flexibility - can increase your range of motion and reduce the risk of injury. (EACH BAND SOLD INDIVIDUALLY) OR (Purchase the Entire 7 Band Set) 1 RED Band (5-35lbs) 1 BLACK Band (30-60lbs) 1 PURPLE Band (25-80lbs) 1 GREEN Band (50-125lbs) 1 BLUE Band (60-150lbs) 1 ORANGE Band(70-170lbs) 1 GRAY Band(80-200lbs)



Number: Fm1810

Commodity: The Fitmus High speed Steel Wire Skipping Adjustable Jump Rope

Description:

Longer Handle 3M Wire Rope Skipping Variety Of Colors To Choose Material: PP + Wire + PVC Length: Rope long 3M Handle total length 18CM Weight: 120g Color: Green/Black/Red/Blue/Yellow/Purple/Orange. Features: Grip more crude, longer, feel better; Net weight:120g



Number: Fm1815

Commodity: The Fitmus Speed Super Fast 10-Feet Adjustable Cable Jump Rope for BEARINGS

Description:

Anti-wrapped design with 2 x extra set of bearings allows for maximum durability,making the rope swivels as fast as your wrist can handle Less resistance Competition speed Easily adjustable rope length PP handles Rope is steel wire coated PVC Cable Length:10/300cm Handle Length:0.6/18cm Perfect for Crossfit, boxing, MMA, Garage Gyms, and all fitness enthusiasts! Net weight:85g Color: Green/Black/Red/Blue/Yellow/Purple/Orange Net weight:85g



Number: Fm1820

Commodity: The Fitmus premium speed cable jump rope

Description:

The newer style "speed" jump ropes consist of light weight plastic handles and a cable rope made of steel wire coated in 2.6mm PVC. This style of jump rope makes it easier to preform double under and even triple under jumps; Steel Cable Length:10/300cm Handle Length:0.45/15cm its contains high-grade steel ball bearings making the for mentioned moves much easier. Perfect the beginner, intermediate and advanced user Color: Green/Black/Red/Blue/Yellow/Purple/Orange. Net weight:110g



Number: Fm1825

Commodity: The Fitmus Aluminium Speed Rope with Dual Bearing

Description:

Knurled easy-grip aluminium handles
Heavy duty brass bushes and spindles for smooth rotation
Improved TPU coated "straight first time" speed wire
300cm long wire with removable/repositionable end-caps
Spare Grub Screws for end caps; Handle Length:0.67/18cm
Color:Green/Red/Yellow/White/Pink. Net weight:250g



Number: Fm1830

Commodity: The Fitmus Speed and Agility Ladder

Description:

Made from 20"wide flat plastic rungs PP,5MM thickness rung (L51cm*W4cm, 65g) & nylon tape border.
Distance between rungs is fully adjustable. Tape boarder color: Black/Yellow/Red/Blue.
Oxford fabric carry bag included Measurement: 6M 12 Rungs

Measurement:8M 16 Rungs



Number: Fm1835

Commodity: The Fitmus Home Gym Abdominal Roller Wheel

Description:

Comfortable soft foam grip
Smooth rolling wheel
Foot pedal provides intense workout versatility
Made from Rubber+PP+Steel Net weight:280g;
Size:17.5 x 16.8 x 3.8 inches



Number: Fm1840

Commodity: The Fitmus Ab Carver Pro

Description:

The Perfect Ab-Carver will carve your core and help you get ripped abs. It provides resistance as you roll out and assistance when you roll back; Ergonomic hand grips are angled to help activate arm and core muscles.
Product size:9 x 7.9 x 9 inches;
Net weight:380g, Made from PU+PP+Steel



Number: Fm1845

Commodity: The Fitmus Double AB Roller Wheel

Description:

Tones and strengthens the abdominals.
Double wheel for added stability.Made from PP+PE+stainless steel tube, size: 25*23*5cm,Net weight:500g

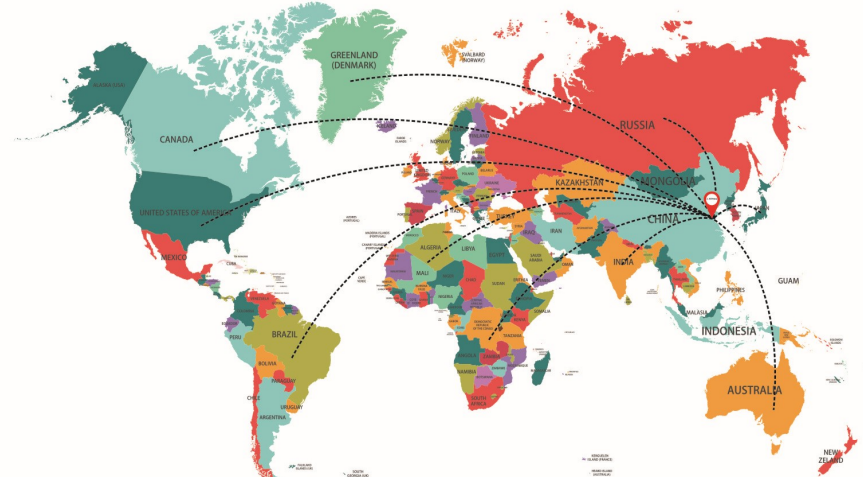


Number: Fm1850

Commodity: The Fitmus Wooden Balance Board

Description:

Our Balance Board is specifically designed to integrate balance into every aspect of fitness, sport performance or rehabilitation. It helps rebuild strength after sporting injuries & sprains and great for rehabilitation of feet, ankle & knee injuries. It also helps train your abdomen and build back muscles
Unique design: Non-slip surface has extracted round balls
24 degree incline
Diameter: 16" (40cm)
Material: Wood
Color: Black with Yellow



Fitmus have been exported to the globe, mainly to United States, Canada, U.K, Australia, Hong kong, Korea, Mexico, and many European countries.

We sincerely hope to establish long-term cooperation and friendship with the friends all over the world. And we warmly welcome friends and partners all over the world to our factory to visit and consult in the coming future.